



STANDARD PRODUCT RANGE

ASTM E84

NFPA 701

UL 2218 (Class: 4)



MADE IN SA



STANDARD PRODUCT RANGE



Arizona

SWATCH IMAGE TO BE UPDATED

Black



Charcoal



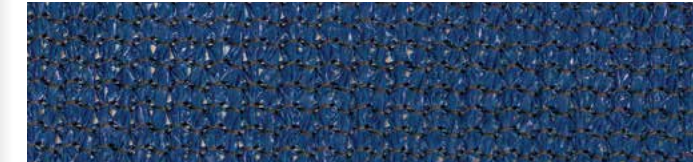
Cinnamon



Desert Sand



Navy Blue



Rain Forest Green



Royal Blue



Silver



Terracotta





ASTM E84

NFPA 701

UL 2218 (Class: 4)



MADE IN SA



NON- STANDARD PRODUCT RANGE

NON- STANDARD PRODUCT RANGE



Atomic Orange



Bleached Slate



Bush Khaki

SWATCH IMAGE TO BE UPDATED

Chocolate

SWATCH IMAGE TO BE UPDATED

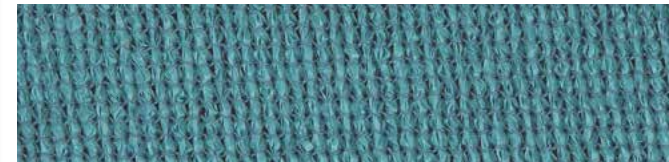
Craft Work



Electric Purple



Laguna Blue



Mulberry



Olive



Red



NON- STANDARD PRODUCT RANGE

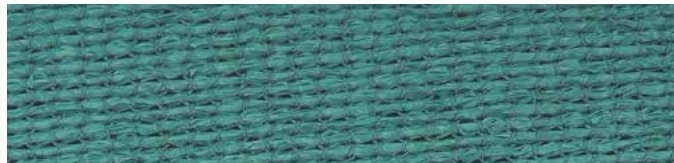
Rust Gold

SWATCH IMAGE TO BE UPDATED

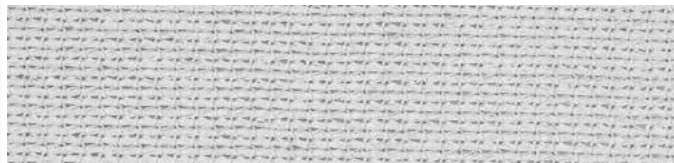
Sunflower Yellow

SWATCH IMAGE TO BE UPDATED

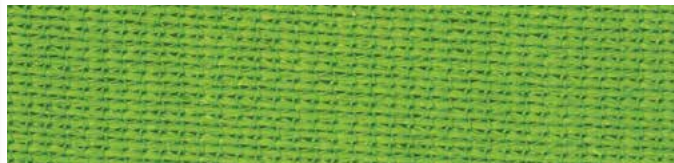
Turquoise



White



Zesty Lime



eXtreme 32 Standard Range	SHADE FACTOR %	UV BLOCK OUT %
Arizona	-	-
Black	95	96
Charcoal	94	96
Cinnamon	89	92
Desert Sand	91	92
Navy Blue	94	95
Rain Forest Green	90	92
Royal Blue	86	92
Silver	91	92
Terracotta	93	93

eXtreme 32 Non-Standard Range	SHADE FACTOR %	UV BLOCK OUT %
Atomic Orange	-	-
Bleached Slate	83	97
Bush Khaki	-	-
Chocolate	-	-
Craft Work	92	96
Electric Purple	89	92
Laguna Blue	90	91
Mulberry	89	84
Olive	88	92
Red	90	95
Rust Gold	-	-
Sunflower Yellow	-	-
Turquoise	92	85
White	-	-
Zesty lime	85	91

TECHNICAL FEATURES

- eXtreme 32 is a three bar knitted, lockstitch pattern, incorporating monofilament and type yarns for dimensional stability, tear and fray resistance.
- Our pattern gives excellent weft and warp stability, due to throw of the weft yarns across the knitting needles during fabrication of the fabric.
- The pattern design achieves high density coverage with the weft yarns, giving up to 97% UV block out.
- The eXtreme 32 fabric is heat set using a stentering process, giving additional dimensional stability and strength as a result of shrinking and equalizing the yarns lengths and knots in a three bar lockstitch pattern.
- The stentering of the eXtreme 32 fabric assists in eliminating sagging and looseness in the fabric after installation.

Manufactured by:



Available in:
- 33m rolls and cut lengths
- Standard width: 3m (folded to 1.5m)



Easy Care &
Maintenance



High UV
Protection
(up to 97%)



Durability &
Longevity



Resilient
Dimentional
Stability



Extreme
Strength



Heat Reduction



High Tear
Resistance